

DISCOVER FMA-PAC!

Please stop by and visit the FMA-PAC table at the 81st annual National Convention. Your donations allow FMA's Political Action Committee to be an effective advocacy tool. By contributing to FMA-PAC, you help strengthen FMA's voice on Capitol Hill. Please consider signing up for Payroll Deduction or joining one of the FMA-PAC Circles listed below:

Executive Circle

Donation: \$500

Recognition: Red Lapel Pin

Congressional Circle

Donation: \$250

Recognition: Blue Lapel Pin

Presidents Circle

Donation: \$100

Recognition: Black Lapel Pin



Please make checks payable to:

FMA-PAC

(Credit, Debit, and cash also accepted)

FMA-PAC Raffle

Each donation of \$25 entitles the donor to one raffle ticket (e.g. if you donate \$100, you earn four tickets). You must be an FMA member to contribute to FMA-PAC and participate in the raffle, but you do not have to be present to win.

TOP PRIZES:

Grand Prize: \$250 Amazon Gift Card!

1st: FitBit Charge 3 2nd: Google Home

3rd: \$100 Visa Gift Card

And even more prizes available!

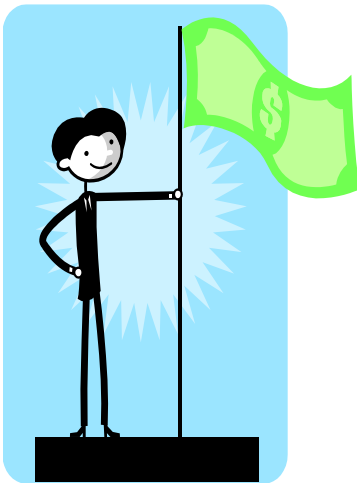
The drawing will be held on Wednesday, March 13th during the Evening Reception. You need not be present to win. Contributions to FMA-PAC are not tax deductible.

DISCOVER FMA-PAC!

- ★ **ATTEND FUNDRAISERS!**
- ★ **ENJOY ONE-ON-ONE INTERACTION WITH YOUR MEMBERS OF CONGRESS!**
- ★ **STRENGTHEN FMA'S VOICE ON CAPITOL HILL!**
- ★ **GET IN THE GAME!**



CONTRIBUTE TODAY!



- ★ By contributing to FMA's Political Action Committee (PAC), you're making a certified deposit in the political bank of FMA.
- ★ Signing up is easy with automatic Payroll Deduction. Forms are available in the convention documents or under "Members Only" section of the FMA Website.
- ★ Donating just \$5 a pay period allows FMA to improve its contribution levels and continue to build on previous legislative successes.

Questions? Comments? Concerns?

Contact Greg Stanford in the FMA National Office at (703) 683-8700 or via e-mail at gstanford@fedmanagers.org

Contributions to FMA-PAC are not tax deductible.